

SOLDERING IRON, HEAT GUN & BLOW TORCH KITS

OPERATING INSTRUCTIONS

First Time Use

Before the first use, it is essential that the copper tip be tinned. Preheat the soldering iron to the melting temperature of the solder (about 30 seconds) and apply solder to the tip. This is all that is required to tin the tip.

Gas Filling

1. Use only high quality butane gas.
2. Before filling, make sure that Flame Adjust Lever is in the left position (the smallest gas output).
3. Holding the torch with the tip down, insert the tip of the butane can into the filler valve and use a pumping action to fill the unit with gas (Fig.1).
Warning: Gas will escape when the tank is full. Don't put any more gas in.
4. After filling, allow the gas to stabilise for a few minutes before igniting.

Igniting

5. Hold the torch upright when igniting.
6. Turn the Flame Adjust Lever to mid-lower range (Fig.3). Push down the Safety Lock button while sliding the Ignition Lever backward (Fig.4) and hold for at least three seconds before releasing. If torch does not ignite, repeat the ignition process.
7. **WARNING:** If the Burner Tube is attached (i.e. the torch is in Soldering Iron or Heat Gun mode), check that a **RED GLOW** appears in the hole in the Burner Tube. If it doesn't, you will need to reignite. If you see a **BLUE FLAME** in the hole (Fig.9), this will cause damage to the torch (Fig.10).

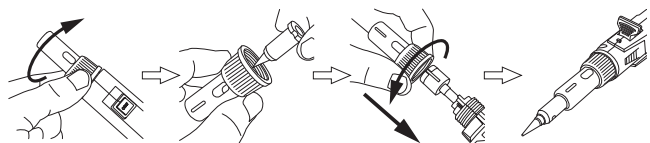
Continuous Flame Function

8. Hold the Ignition Lever then press the Flame Lock button at the same time (Fig. 5).

Soldering Iron Function

This function requires the Solder Tip, Burner Tube and Blow Torch Head to be installed. Ensure the torch is cool before installing any components.

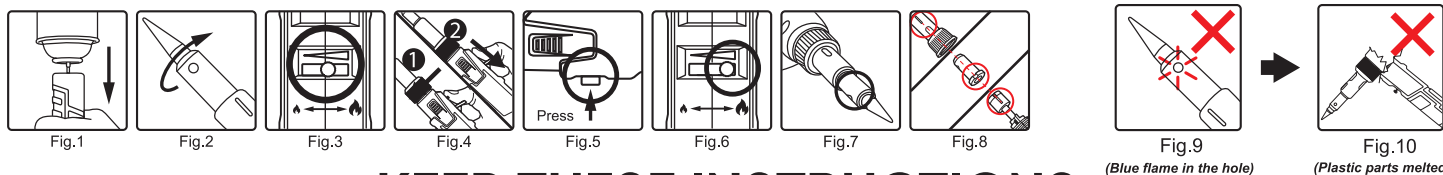
9. The Solder Tip simply screws into the Burner Tube (Fig.2).
10. To install the Burner Tube, unscrew and remove the Blow Torch Head. Insert the Burner Tube into the Blow Torch Head. There is a notch (Fig.8) which will need aligning to ensure the Burner Tube is seated properly in the Blow Torch Head. Screw both pieces back on the main unit.
11. Ignite as per Steps 5-7.
12. After igniting, move the Flame Adjust Lever to maximum to preheat the torch (Fig.6).
13. After preheating, adjust the flame to suit your needs.



Heat Gun Function

This function requires the Burner Tube and Blow Torch Head to be installed. Ensure the torch is cool before installing or removing any components.

14. The Solder Tip can be removed by unscrewing from the Burner Tube.
15. If the Burner Tube needs installing, refer to Step 10.
16. Ignite as per Steps 5-7.
17. After igniting, adjust the Flame Adjust Lever to generate a suitable flame for your needs (Fig.6).



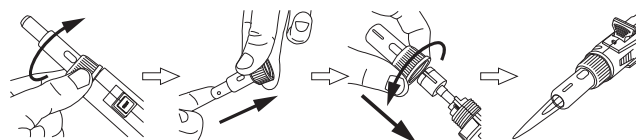
KEEP THESE INSTRUCTIONS



Blow Torch Function

This function requires just the Blow Torch Head to be installed. Ensure the torch is cool before removing any components.

18. If required, unscrew and remove the Blow Torch Head from the main unit. Remove the Burner Tube with the solder tip from the Blow Torch Head and screw the Blow Torch Head back on the main unit.
19. Ignite as per Steps 5-7.
20. After igniting, adjust the Flame Adjust Lever to generate a suitable flame for your needs (Fig.6).



Temperature Adjustment

21. Use the Flame Adjust Lever to adjust the flame intensity.
22. For the best result, adjust the length of the flame to approximately 10-25mm. Do not make the flame too long, it will only waste gas and make the flame unstable.

Turning Off

23. When the Flame Lock is not being used, simply release the Ignition Lever.
24. When the Flame Lock is engaged, pull the Ignition Lever again.

Storage

25. Make sure that the torch is turned off and has cooled down before storing or leaving unattended.
26. Do not store in direct sunlight or anywhere that will exceed 40°C.

Warnings

- Keep the torch out of reach of children.
- The burn tip and other accessory tips get hot in operation so beware.
- The flame is invisible in sunlight so beware.

Troubleshooting

Problem	Probable Cause	Solution
Does not ignite	1. Empty fuel 2. Gas pressure too high or low	1. Refill with Butane gas 2. Slide the flame adjust lever to lower or higher position
Excessive Gas Flow	Setting too high	Adjust flame adjust lever gradually Re-ignite the torch by gradually increasing the gas
Low Gas Pressure	1. Low fuel 2. Cold fuel	1. Refuel 2. Hold in hands to warm up